



NEBRASKA OMNIUM WEEKEND



The Nebraska Omnium Weekend 2015

***A weekend of exciting bike racing with three
great courses.***

***\$6000 in prize money plus merchandise.
Weekend #4 of the Midwest Flyover Series-over
\$30,000 of prizes.***

The Sid Dillon Time Trial

The Ashland Criterium

***The Sid Dillon State
Championship Road Race***



The Sid Dillon Time Trial.

Saturday June 6, 2015 9 am
Cash prizes plus merchandise

New development: we discovered that repaving of Ashland Road (site of last years time trial) will be finished in mid May, earlier than expected. So instead of using Church Road as we had planned we will again use Ashland road, on brand new super smooth asphalt. This will be run Eddy Merckx style (no TT bikes). But this year we are inviting triathletes to participate as Cat 5 Aero, with no omnium points.

Description: Racers will do an out-and-back, leaving from 24th street and Ashland Road (Furnas Street) in Ashland, for a total of about 14 miles (7 for juniors). The terrain is rolling hills and farmland with very little traffic. Registration is at Wiggernhorn Park, site of the Ashland Criterium later in the day. It is moderately hilly. It is on the Nebraska prairie so winds can be a factor. Parking and registration are at Wiggernhorn park in Ashland (site of the crit later in the day).



This is the first of three events of the Nebraska Omnium Weekend, which is part of the Midwest Flyover Series, offering \$30,000 plus merchandise in prizes. Racers earn points in each race for the overall Omnium. Winners of the NOW earn points for the Midwest Flyover Series. See www.MidwestFlyover.com for Series scoring details.

	Time	Category	Duration	Prizes
Entry Fee				
0900	Junior Girls/Boys 9-12	7 miles	Medals	\$10
To follow	Junior Girls/Boys 13-14	7 miles	Medals	\$10
To follow	Junior Girls/Boys 15-16	14 miles	Medals	\$10
To follow	Junior Girls/Boys 17-18	14 miles	Medals	\$10
To follow	Women Category 5	14 miles	Medals	\$30
To follow	Men Category 5	14 miles	Medals	\$30
To follow	Men Masters 50+	14 miles	35/20	\$30
To follow	Women Masters 40+	14 miles	35/20	\$30
To follow	Women Pro, 1,2,3	14 miles	50/40/30/20	\$30
To follow	Men Category 4	14 miles	40/30/20/15/10	\$30
To follow	Men Category 3	14 miles	50/40/30/20/10	\$30
To follow	Men Pro, Category 1,2	14 miles	70/50/40/20/10	\$35
To follow	Men/women cat 5 aero bikes (not eligible for omnium points)	14 miles	Medals	\$30
To follow	Men/women tandems	14 miles	bragging rights	\$30

Sid Dillon Time Trial Rules & Information:

- All 2015 USAC Rules are in effect.
- This time trial is 'Eddy Merckx style'. Aero bars including clip-ons are not allowed. Disk wheels and dedicated TT helmets are not allowed. Road helmets that are 'aero' in nature such as the Specialized Evade are allowed. Skins suits and shoe covers are allowed. **Exception:** We have a new category: Cat 5 Aero. This is intended for triathletes who may not have a suitable road bike, or prefer to use the bike they normally use in a triathlon. TT/triathlon bikes and disc wheels are allowed in this category; Omnium points will not be awarded. Also anyone with a tandem can participate in the tandem category; any combination of men and women.
- Riders must have a valid and current USAC license. Registration for the time trial **is only available** on line at www.usacycling.org. One day licenses are available through USAC, **only** for Men 5/Women 4/Juniors for \$15 (which is refunded if you later purchase an annual license.) Riders in all other categories must have an annual license. (That's a USAC rule).
- **Registration deadline is Friday June 5th, 6 pm central (5 pm Mountain) and is on-line only. There is no day-of-event registration for the Time Trial.** (But day-of-event registration is available for the Crit and Road Race for an extra \$10). Riders will pick up their race packets at the TT registration tent at I-80 and Highway 63 (south side). (see the map)
- Start times will be posted on line at www.NebraskaOmnium.com by 10 pm Friday and will also be posted at the registration tent at 8 am Saturday. Start times in each category will be based on the following:
 1. For riders without a USAC ranking, start times will be in the reverse order of registration; the last one registered starts first.
 2. For riders with a USAC ranking, the highest ranking (less points) goes last, lower ranking (more points) goes right after the unranked riders.
- **Don't be late.** Volunteers will assist getting racers to the line but it is your responsibility to be on time. Allow enough time to find the venue, pick up your race packet and pin on your number. **Your timing will start even if you are not there.**
- There will not be a podium presentation for the Time Trial; winners will pick up their awards at the registration tent.
- The promoter reserves the right to combine fields or limit payouts to half the field.
- **Remember: there will be no day of event registration for the time trial, and your timing starts at your assigned time whether you are there or not.**

Free wheels to one lucky rider: All registered racers are eligible to enter a drawing for a free set of Williams System 30 wheels, to be awarded at Sunday's Road race. **You must be present to win.** Make sure you fill out a raffle ticket when you pick up your race packet. Check out the Williams wheels at their tent at all three races of the Nebraska Omnium Weekend.



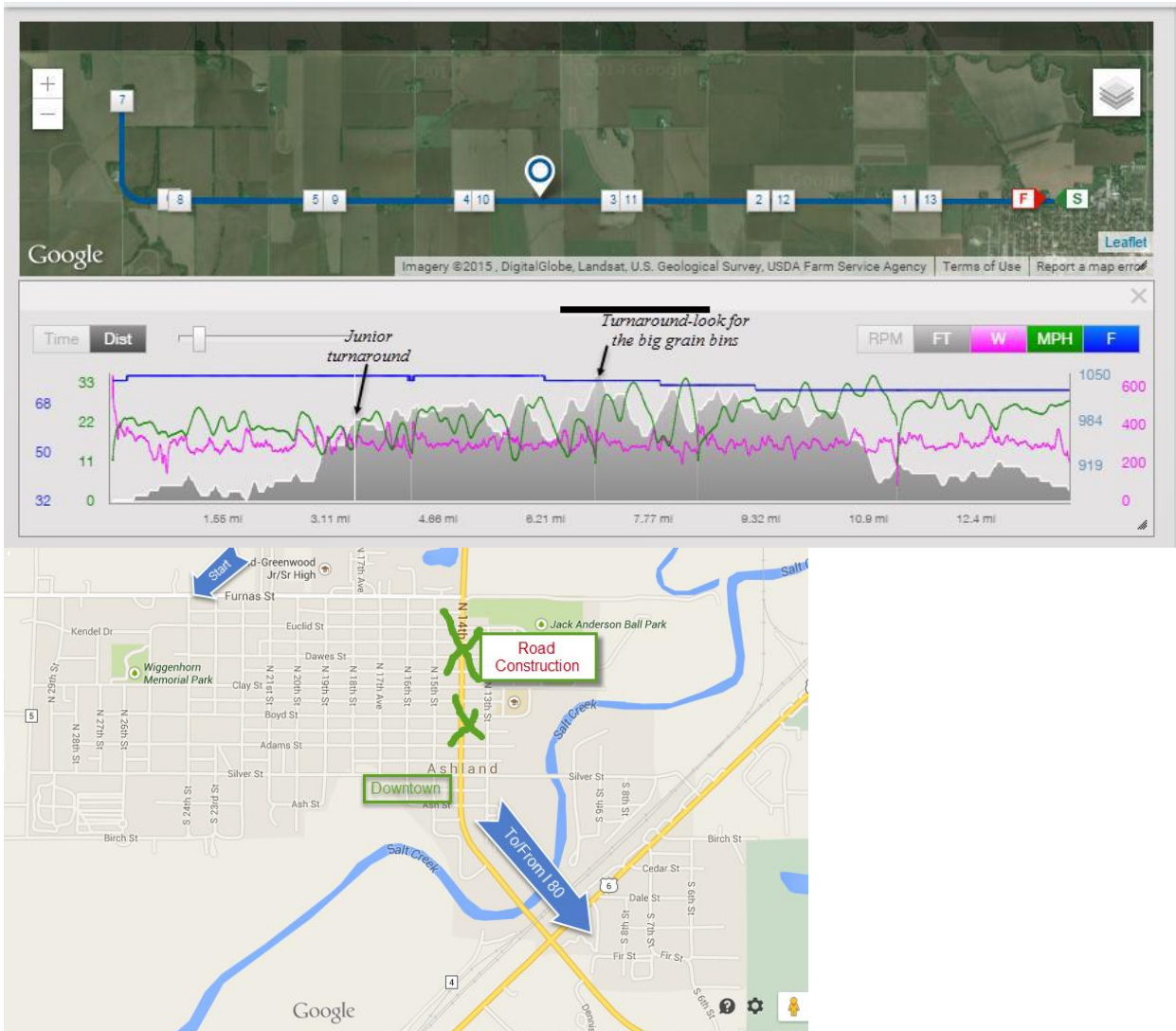
Bonus prize for juniors, category 4 women, and category 5 men. In order to encourage participation by beginners we will give away a Cascade Trainer, awarded at Sunday's race. It's a brand new trainer, similar to a Cyclops fluid trainer. We will use the same raffle tickets as the Williams wheels raffle. We will keep drawing until we get a junior, category 4 woman or category 5 man.



Sid Dillon Time Trial Course Description:

Staging and start/finish will be at 24th Street and Ashland Road (known as Furnas street in Ashland). We will have coffee, water, bagels and fruit at the race site, or feel free to patronize some of the businesses in Ashland. Ashland is kind enough to allow us to use their city at no charge so please drop some money in town to show our appreciation.

Racers will go west on Ashland Road about 7 miles, then turn around and return via the same route for a total of about 14 miles. The road is perfectly straight (except for one bend) with gentle rolling hills. The surface is newly paved asphalt. There is no shoulder and the road is open to cars, but the traffic is very light. Corner marshals will be at the main intersections. After finishing riders should move off the road to avoid congestion and traffic concerns.



Dillon Brothers
Harley-Davidson
& **MotorSports**

SID DILLON

You are what drives us!



Ashland Criterium

Wiggenhorn Memorial Park, Ashland Nebraska.

Saturday June 6, 2015. 2 to 8 pm

\$1980 in cash prizes plus merchandise

Description: Racers in the Ashland Criterium will find an exciting course, weaving through a residential neighborhood next to the swimming pool. The 8 corners and numerous rollers will make it difficult for 'passengers' to just sit on the back without working. The figure eight configuration plus an uphill finish will provide lots of good viewing for the spectators.

This is the second of three events of the Nebraska Omnium Weekend, which is part of the Midwest Flyover Series, offering \$30,000 plus merchandise in prizes. Each race earns omnium points for the Nebraska Omnium Weekend. Winners of the NOW earn points in the Midwest Flyover Series. See www.MidwestFlyover.com for details.



Time	Event	Duration	Prizes	Entry Fee
12:30pm	Rider check-in opens, course open for warm up.			
1:30 pm	Men Masters 50+ Women Masters 40+	40 minutes	50,30,20 each	\$30
2:30 pm	Juniors M/F 9-12, 13-14	20 minutes	Medals/3	\$10
3:00pm	Juniors M/F 15-16, 17-18	20 minutes	Medals/3	\$10
3:30pm	Men 5	30 minutes	Medals/3	\$30
3:30pm	Women 4	30 minutes	Medals/3	\$30
4:15pm	Women P,1,2,3	40 minutes	150, 100, 70, 30	\$30
5:10pm	Kids Race	Short Course	Prizes	FREE
5:40pm	Men 4	40 minutes	100, 80, 60, 30	\$30
6:35pm	Men 3	50 minutes	150, 100, 80, 50, 30	\$30
7:40pm	Men Pro, 1, 2	60 minutes	250, 200, 150, 80, 50, 20	\$35



Ashland Criterium Rules & Information:

- All 2015 USAC Rules are in effect.
- Riders must have a valid and current USAC license. Registration is available on line through www.usacycling.org. One day licenses are available through USAC for Men 5/Women 4/Juniors. One day and annual licenses are available on race day at Registration.
- Registration deadline for on-line registration is Friday June 5th, 6 pm central. There is day-of-event registration available until 30 minutes before each race for an additional \$10.
- Riders may register for a second race for an additional \$10 (up to 30 minutes before the race).
- A "wheel pit" will be available just past the finish line. Wheels should be reclaimed within 30 minutes of the conclusion of each race. The promoter is not responsible for lost or stolen wheels.
- Awards presentations will immediately follow each race. Pay attention or you will miss out on your podium spot.
- The race will be held rain or shine, except there may be delays for severe weather.
- The promoter reserves the right to combine fields or limit payouts to half the field.

Free wheels for one lucky rider: All registered racers are also eligible to enter a drawing for a free set of Williams System 30 wheels, to be awarded at the end of Sunday's Road Race awards presentation. **You must be present to win.** Check out the Williams wheels at their tent at all three races of the Nebraska Omnium Weekend.

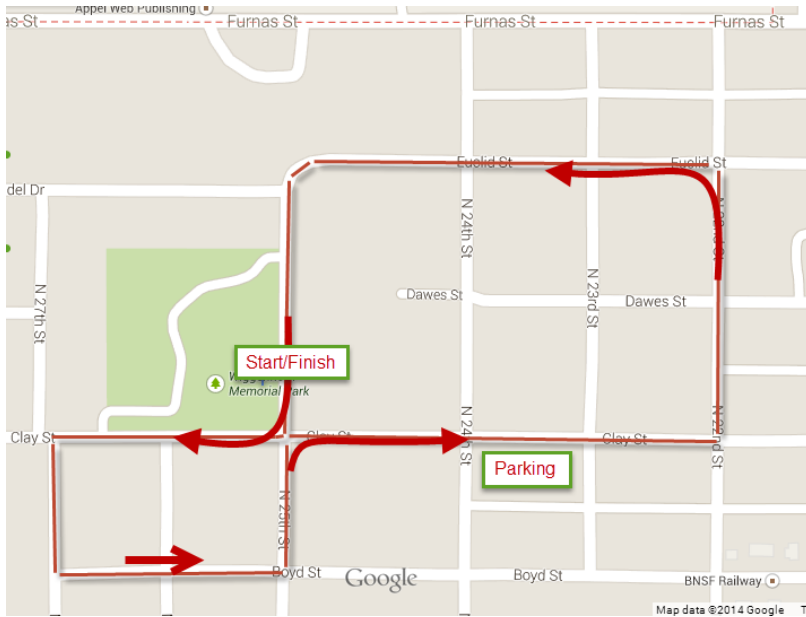


Bonus prize for juniors, category 4 women, and category 5 men. In order to encourage participation by beginners we will give away a Cascade Trainer on Sunday. It's a brand new in the box trainer, similar to a Cyclops fluid trainer. We will use the same raffle tickets as the Williams wheels raffle; we will keep drawing until we get a junior, category 4 woman or category 5 man. This will awarded at Sunday's road race.



Ashland Criterium Course Description:

This is the same course as last year, again going counter clockwise. We changed directions last year and we like counterclockwise better because the finish is more exciting for racers and spectators. Staging and start will be on the hill on N 25th street, near the swimming pool. Racers will make a series of sharp corners, then take a fast descent on Clay Street, then take two sharp corners onto Euclid Street. At the gradual bend onto 25th street there is an uphill stretch to the finish line. Racers will need to pay attention because attacks could happen at several points on the course. The course is 1 mile long. Go to our facebook page to see the course profile. (Search for Nebraska Omnium Weekend).



The race is held at Wiggernhorn Park, at Ashland's swimming pool. Bring the kids and enjoy the park and pool while you are here. Racers can use the showers for a minimal fee.

Directions from I-80: take exit 426, go northwest on Highway 66 into Ashland, past Casey's and the downtown area, keep going north 6 blocks, and then turn left (west) on Furnas street/Ashland Road until 25th. There is ample parking on the city streets. There will be road construction in Ashland in June, so allow a few extra minutes to get to Wiggernhorn Park. Watch for the detour signs; the detours will be only a few blocks long.

Race Directors:

Rich Pearson Richpearson@neb.rr.com 402 720 4919

Craig Tuttle craig@cjtncjt.com 402 598 6838

SID DILLON



You are what drives us!

Dillon Brothers
Harley-Davidson
& *MotorSports*

**SID DILLON CHEVROLET/
DILLON BROTHERS HARLEY DAVIDSON & MOTORSPORTS
NEBRASKA STATE ROAD RACE CHAMPIONSHIP**

South Bend, Nebraska

Sunday June 7, 2015. 1130 am

\$1980 in cash prizes plus merchandise for the Road Race

Racers in the Sid Dillon Road Race will discover that Nebraska is not flat. This course has plenty of hills and an exciting uphill finish.

This is the third and final event of the Nebraska Omnium Weekend, which is Stage 3 of the Midwest Flyover Series, offering \$30,000 plus merchandise in prizes. Each race earns omnium points for the Nebraska Omnium Weekend plus these points accumulate in the Midwest Flyover Series.

See www.MidwestFlyover.com for details.



Category	Start	Laps	Miles	Prizes	Field Limit	Entry Fee
Men Pro, 1 & 2	11:30am	5	80	\$250,200,150,80,50,20	75	\$35
Men 3	11:35	4	64	\$150, 100, 80, 50, 30	75	\$30
Women 1, 2, 3 \$30	11:40	3	48	\$150, 100, 70, 30		50
Men 4	11:40	3	48	\$100, 80, 60, 30	75	\$30
Men Masters 50+	11:40	3	48	\$50,30,20 each	75	\$30
Men 5, Women 4	11:45	2	32	Medals/3	50	\$30
Women Masters 40+	11:45	2	32	\$50, 30, 20	50	\$30
Juniors 9-12, 13-14	11:50	1	16	Medals/3	50	\$10.
Juniors 15-16, 17-18	11:50	2	32	Medals/3	50	\$10.

Free wheels for one lucky rider: All registered racers are also eligible to enter a drawing for a free set of Williams System 30 wheels. You must be present to win. Check out the Williams wheels at their tent at all three races of the Nebraska Omnium Weekend.



Bonus prize for juniors, category 4 women, and category 5 men. In order to encourage participation by beginners we will give away a Cascade Trainer. It's a brand new in the box trainer, similar to a Cyclops fluid trainer. We will use the same raffle tickets as the Williams wheels raffle; we will keep drawing until we get a junior, category 4 woman or category 5 man. You must be present to win.



Both drawings will occur at the beginning of the awards ceremony, just after the Pro 1,2 road race.

REGISTRATION IS ONLINE AT <http://www.usacycling.org>. It is fast and secure and the preferred method. Online registration for the road race closes at 6 pm Central Saturday June 6, 2014. Registration on the day of the event is available until 11 am for an extra \$10. (Juniors: you will need to have the waiver signed by a parent).

- The entry fee includes USAC registration fees and chip rental.
- Riders must have a USAC annual license OR purchase a 1-day license through www.USACycling.org. Annual or one day licenses are available at registration. (USAC rules: Only category 4 women or category 5 men or juniors can get a one day license; all others must purchase an annual license.)
- State championships are only for annual license holders who are residents of Nebraska.
- Use your number from the previous events. Put the number on the left side. Line up in the staging area 15 minutes before your event to allow for roll call and instructions.
- Allow sufficient time prior to your race to pick up your timing chip. Chips are turned in Saturday afternoon and reissued on Sunday.
- Registration for just one or two events of the Nebraska Omnium Weekend is permitted; omnium points will be awarded to all racers as described below.
- Don't forget to return your chip after the race.

GENERAL RACE RULES & INFORMATION

- All 2015 USAC rules are in effect.
- Racers can work only with the group they started with. If one group overtakes another both groups are neutralized while passing.
- Events will be held rain or shine.
- Place race numbers on the left side.
- Helmets must be worn at all times while on the bike.
- Only Nebraska residents are eligible for Nebraska State Championship awards.
- Race organizers reserve the right to cancel/combine events or pay out to only the top half of a field in the event of low rider turnout.
- Neutral wheel support will be "wheels in/wheels out." Please make sure to identify your wheels properly. The promoter is not responsible for lost or stolen wheels. Please share wheels with teammates as there is limited space for wheels.
- The yellow line rule will be strictly enforced, except that the course will be open to two full lanes for the last 500 meters.
- Junior gear restrictions will be enforced as specified in the USAC 2015 Rulebook. All junior riders will be subject to a rollout immediately following their competition. If in doubt check your gearing prior to the race.
- Juniors: You will have your own group for the road race. Riders 9-12 and 13-14 will finish after one lap (16 miles); riders 15-16 and 17-18 will continue on for another lap (32 miles).
- Race result protests must be filed within fifteen minutes of a result posting. Race incident reports must be filed with a race official within fifteen minutes of the finish of a race. Race organizers will attempt to distribute prizes within an hour of posting final results.
- All races will begin promptly as scheduled and will be conducted regardless of weather conditions, unless the officials and race organizers agree to modify and/or cancel a race due to extraordinary circumstances or potentially dangerous weather or road conditions.
- **RACE SUPPORT:** No personal or team support vehicles will be permitted on the course. Neutral wheel support may be provided in the road race on a "wheels in, wheels out" basis. Wheels should be clearly marked with rider name and race number. All riders must put their wheels in the wheel truck at least 15 minutes prior to the start of the first race. Wheels should be reclaimed within 30 minutes of the conclusion of each race.

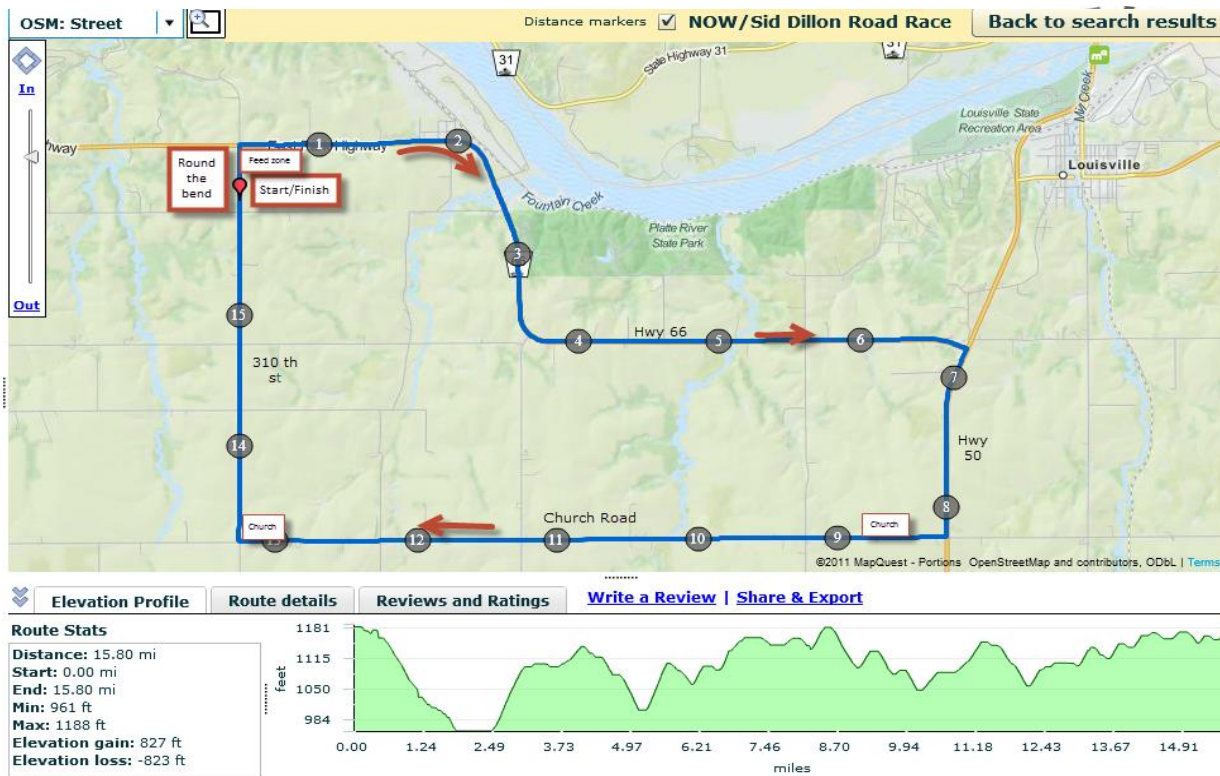
COURSE DETAILS

Each race group will stage in the Round the Bend Steakhouse driveway. There will be a very short neutral rollout ; racing will begin on the descent to South Bend. See the map below. The **finish line will be about 500 meters south of Highway 66, at the highest point of the course**. The full width of the road will be available for the last 500 meters-look for the cones at the bottom of the last hill. After finishing, riders should quickly move off the road to allow other groups to continue their race. Prizes and awards will be distributed in the parking lot at Round the Bend immediately after the Pro 1,2 riders finish. Free pizza and soft drinks will be available after the race. (You have to provide your own adult beverages; Round the Bend Restaurant is not open on Sunday).

There will be two feed zones. Feed zone 1 is just past the finish line directly across from Round the Bend. Feed zone 2 is at the SE corner of the course on Church Road. Hand-ups will be from the right hand side of the road only. Neutral water will be provided at feed zone 1 only; personal or team hand-ups are allowed within both feed zones. Empty bottles should be discarded only at the feed zones. Hand ups outside the official feed zones are not permitted. Racers are asked to not attack in the feed zones.

There are two churches on Church Road; Sunday services finish at 11:30 so most of the people will be gone by the time we go through. Be respectful and courteous to any church traffic.

Directions to the course: take I-80 to exit 426 (Ashland/South Bend), drive east on Highway 66 2 miles to the hill with three flags, at Round the Bend Steakhouse (Home of the Testicle Festival on June 13th). Round the Bend is closed on Sundays. The nearest gas station or food is in Ashland 10 miles away so plan ahead. We will have water available in the parking lot before the race and free pizza afterwards. There will be portable toilets in the parking lot.



Race Directors:

Rich Pearson, 1359 Wilmont Street Fremont, Nebraska 68025 (402) 720-4919 Richpearson@neb.rr.com

Craig Tuttle craig@cjtncjt.com 402 598 6838

Omnium Information

The Nebraska Omnium Weekend is a set of three races in which riders compete for points in each event and final placings are determined by total points in all events. Riders will receive points for their finishing placing in each of the races using the standard USAC points scale on all three races. All riders placing 16th and lower but still finishing the race will receive 1 point. The riders with the highest cumulative points at the end of the Nebraska Omnium Weekend will be awarded the cash payout and trophies. Overall ties will be broken by the placing in the road race.

Omnium Points (per USAC rulebook)

Place	Points	Place	Points	Place	Points
1	25	6	10	11	5
2	20	7	9	12	4
3	16	8	8	13	3
4	14	9	7	14	2
5	12	10	6	15	1

16th and below: 1 point for finishers. DNF or DNS = 0 points.



The Nebraska Omnium and Flyover Series presentation will occur following Sunday's Sid Dillon Road Race. See www.MidwestFlyover.com for scoring details including tiebreaker rules.

Omnium Prize List \$1335

Junior Women	Medals
Junior Men	Medals
Women 4	Medals
Men 5	Medals
Men Masters 50+	40, 25, 10
Women Masters 40+	40, 25, 10
Men 4	80, 50, 30, 20, 10
Women P,1,2,3	100, 70, 40, 20, 10
Men 3	100, 70, 40, 30, 20, 10
Men P,1,2	150, 105, 80, 60, 50, 40



www.teamkaoscycling.com

Joyride Bicycles, Lincoln www.joyridenebraska.com



Lodging: There are several lodging opportunities.

Mahoney State Park and Platte River State Park are on or near the road race course near Ashland. Both have modern camping facilities plus lodges. The lodges are similar to nice hotels plus you have lots of recreational opportunities. Both lodges have restaurants (open for breakfast also).

Mahoney: outdoornebraska.ne.gov/parks/guides/parksearch/showpark.asp?Area_No=273

Platte River:

outdoornebraska.ne.gov/Parks/park_pages/PlatteRiver_SP/pdf/platte_river_state_park_accomodations.pdf

The nearest hotel is Super 8 in Gretna; others are available nearby. There are no hotels in Ashland or Louisville.

Nearby Attractions:

- **Strategic Air and Space Museum** www.sasmuseum.com One of the best aircraft museums around. Just west of the interstate.
- **Mahoney State Park** Nebraska's largest state park, just west of the interstate on Highway 66.
- **Platte River State Park** on the road race course.
- **Others:** see www.visitcasscounty.com and www.visitsaunderscounty.org.

RACE SPONSORS

Title Sponsor: Sid Dillon Chevrolet Fremont and Blair / Dillon Brothers Harley Davidson and Motorsports. www.siddillon.com and www.dillon-brothers.com.

SID DILLON



You are what drives us!

Dillon Brothers
Harley-Davidson
& **MotorSports**

