



# ***The Nebraska Omnium Weekend 2016***

***A weekend of exciting bike racing with three great courses. \$7095 in prize money plus merchandise. Weekend #2 of the Midwest Flyover Series-over \$30,000 of prizes.***

***The Sid Dillon Time Trial***

***The Ashland Criterium***

***The Sid Dillon State  
Championship Road Race***



# The Sid Dillon Time Trial.

Saturday May 14th, 2016 9 am  
Cash prizes plus merchandise

This year we will again be on Ashland Road, newly paved one year ago. It's silky smooth with light traffic. As with all the Flyover time trials this will be run Eddy Merckx style (no TT bikes). **Number and chip pick up is at the Ashland Middle School 1837 Furnas Drive, Ashland. The start/finish line is 6 blocks west, at 24<sup>th</sup> and Furnas St.**

**Description:** Racers will go out-and-back, leaving from 24<sup>th</sup> street and Ashland Road (Furnas Street) in Ashland, for a total of about 14 miles (7 for juniors). The terrain is rolling hills and farmland with very little traffic. It is on gently rolling hills typical of eastern Nebraska, but winds can be a factor. Registration will be set up near the start/finish line. Ample parking is available at the Ashland Middle School and Ashland High School (but only for the Time Trial) or on the city streets, but please note that parking is allowed only on the south and west sides of all streets.



This is the first of three events of the Nebraska Omnium Weekend, which is part of the Midwest Flyover Series, offering \$30,000 plus merchandise in prizes. Racers earn points in each race for the overall Omnium. Winners of the NOW earn points for the Midwest Flyover Series. See [www.MidwestFlyover.com](http://www.MidwestFlyover.com) for Series scoring details.

Time	Category	Duration	Prizes	Entry Fee
0900	Junior Girls/Boys 9-12	7 miles	Medals	\$10
To follow	Junior Girls/Boys 13-14	7 miles	Medals	\$10
To follow	Junior Girls/Boys 15-16	14 miles	Medals	\$10
To follow	Junior Girls/Boys 17-18	14 miles	Medals	\$10
To follow	Women Category 5	14 miles	Medals	\$30
To follow	Men Category 5	14 miles	Medals	\$30
To follow	Men Masters 50+	14 miles	35/20	\$35
To follow	Women Masters 40+	14 miles	35/20	\$35
To follow	Women Pro, 1,2,3	14 miles	70/50/40/20/10	\$40
To follow	Men Category 4	14 miles	40/30/20/15/10	\$35
To follow	Men Category 3	14 miles	50/40/30/20/10	\$35
To follow	Men Pro, Category 1,2	14 miles	70/50/40/20/10	\$40

## Sid Dillon Time Trial Rules & Information:

- All 2016 USAC Rules are in effect.
- This time trial is 'Eddy Merckx style'. Aero bars including clip-ons are not allowed. Disk wheels and dedicated TT helmets are not allowed. Road helmets that are 'aero' in nature such as the Specialized Evade are allowed. Skins suits and shoe covers are allowed.
- Riders must have a valid and current USAC license. One day licenses are available through USAC. New USAC rules now allow all categories to get a one day license. \$10 for Men Category 5 and Women Category 4, \$30 for all other categories.
- Registration for the time trial is **only available** on line at [www.usacycling.org](http://www.usacycling.org). **Registration deadline is Friday May 13<sup>th</sup> at 12 noon Central (11 am Mountain) and is on-line only. There is no day-of-event registration for the Time Trial.** (But day-of-event registration is available for the Crit and Road Race for an extra \$10). Riders will pick up their race packets at the TT registration tent at the Ashland Middle School parking lot on Furnas Street. Parking is available at the middle and high schools. (Due to school events these lots are not available in the afternoon.) **Please observe parking laws; parking is only allowed on the South and West sides of most streets.**
- Start times will be posted on line at [www.NebraskaOmnium.com](http://www.NebraskaOmnium.com) by 10 pm Friday and will also be posted at the registration tent at 8 am Saturday. Start times in each category will be based on the following:
  1. For riders with a USAC ranking, the highest ranking (less points) goes last, lower ranking (more points) goes right after the unranked riders.
  2. For riders without a USAC ranking, start times will be in the reverse order of registration; the last one registered starts first.
- **Don't be late.** Volunteers will assist getting racers to the line but it is your responsibility to be on time. Allow enough time to find the venue, pick up your race packet and pin on your number. **Your timing will start at your scheduled time even if you are not there.**
- There will not be a podium presentation for the Time Trial; winners will pick up their awards at the registration tent.
- The promoter reserves the right to combine fields or limit payouts to half the field.
- **Remember: there will be no day of event registration for the time trial, and your timing starts at your assigned time whether you are there or not.**

**Free wheels to one lucky rider:** All registered racers are eligible to enter a drawing for a free set of Williams System 30 wheels, to be awarded at Sunday's Road race. **You must be present to win.** Make sure you fill out a raffle ticket when you pick up your race packet. Check out the Williams wheels at their tent at all three races of the Nebraska Omnium Weekend.



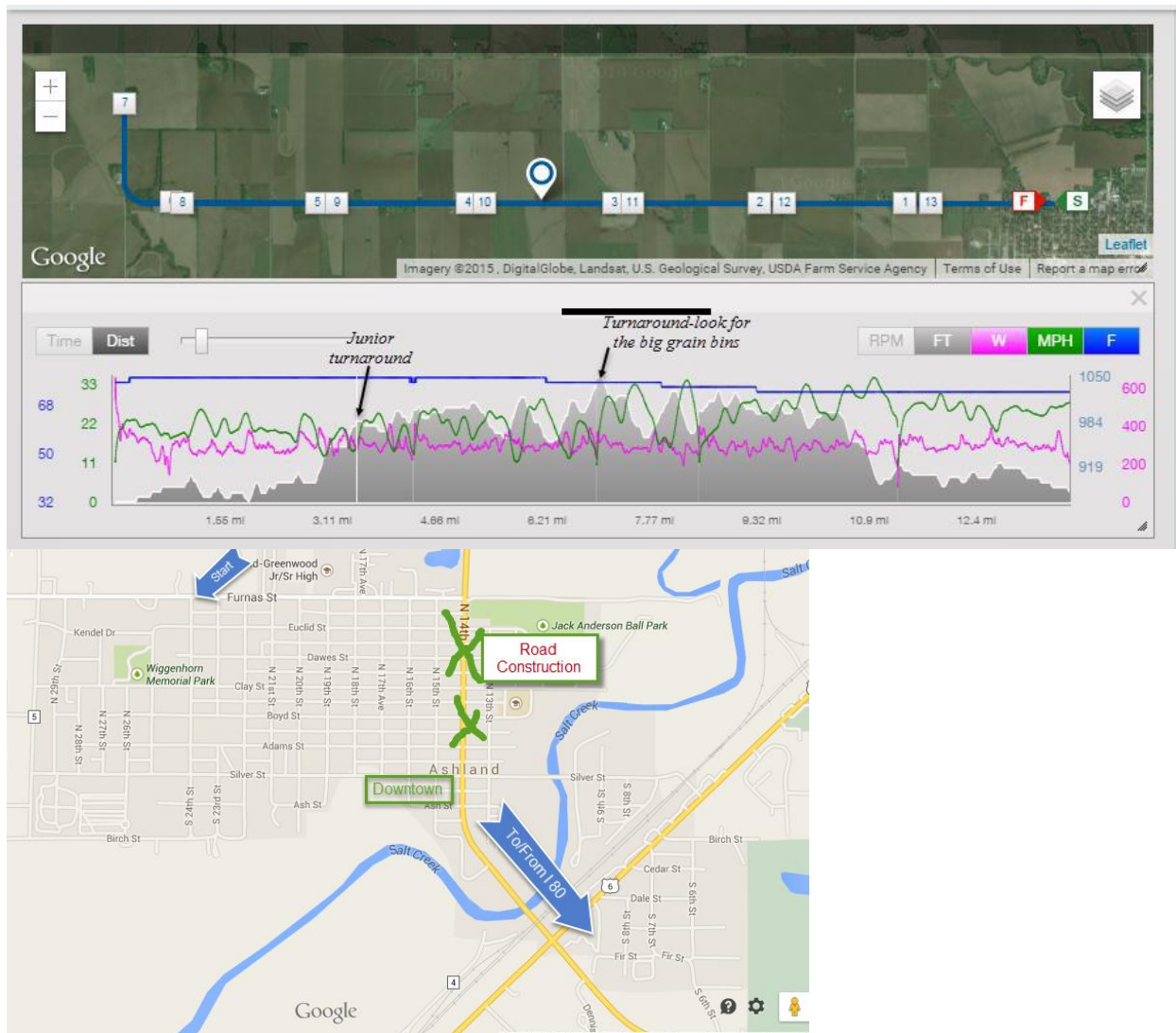
**Bonus prize for juniors, category 4 women, and category 5 men.** In order to encourage participation by beginners we will give away a Cascade Trainer, awarded at Sunday's race. It's a brand new trainer, similar to a Cyclops fluid trainer. We will use the same raffle tickets as the Williams wheels raffle. We will keep drawing until we get a junior, category 4 woman or category 5 man.



## Sid Dillon Time Trial Course Description:

Staging and start/finish will be at 24<sup>th</sup> Street and Ashland Road (known as Furnas street in Ashland). We will have coffee, water, bagels and fruit at the race site, or feel free to patronize some of the businesses in Ashland. Ashland is kind enough to allow us to use their city at no charge so please drop some money in town to show our appreciation. Observe all parking laws; pick up your trash; be courteous to Ashland residents. We are their guests. Bad behavior might cause them to cancel future Ashland races.

Racers will go west on Ashland Road about 7 miles, then turn around and return via the same route for a total of about 14 miles. The road is perfectly straight (except for one bend) with gentle rolling hills. The surface is newly paved asphalt. There is no shoulder and the road is open to cars, but the traffic is very light. Corner marshals will be at the main intersections. After finishing riders should move off the road to avoid congestion and traffic concerns.



**Dillon Brothers**  
**Harley-Davidson**  
& **MotorSports**

**SID DILLON**  
  
You are what drives us!



# Ashland Criterium

Wiggenhorn Memorial Park, Ashland Nebraska.

Saturday May 14th 2016. 2 to 8 pm

2380 in cash prizes plus merchandise

Description: Racers in the Ashland Criterium will find an exciting course, weaving through a residential neighborhood next to the swimming pool. The 8 corners and numerous rollers will make it difficult for 'passengers' to just sit on the back without working. The figure eight configuration plus an uphill finish will provide lots of good viewing for the spectators. **Registration and number/chip pickup is at the swimming pool at 25<sup>th</sup> and Clay, Ashland, Nebraska**

This is the second of three events of the Nebraska Omnium Weekend, which is part of the Midwest Flyover Series, offering \$30,000 plus merchandise in prizes. Each race earns omnium points for the Nebraska Omnium Weekend. Winners of the NOW earn points in the Midwest Flyover Series. See [www.MidwestFlyover.com](http://www.MidwestFlyover.com) for details.



Time	Event	Duration	Prizes	Entry Fee
12:30pm	Rider check-in opens, course open for warm up.			
1:30 pm	Men Masters 50+ Women Masters 40+	40 minutes	50,30,20 each	\$35
2:30 pm	Juniors M/F 9-12, 13-14	20 minutes	Medals/3	\$10
3:00pm	Juniors M/F 15-16, 17-18	20 minutes	Medals/3	\$10
3:30pm	Men 5	30 minutes	Medals/3	\$30
3:30pm	Women 4	30 minutes	Medals/3	\$30
4:15pm	Women P,1,2,3	40 minutes	250, 200, 150, 80, 50, 20	\$40
5:10pm	Men 4	40 minutes	100, 80, 60, 30	\$35
6:05pm	Men 3	50 minutes	150, 100, 80, 50, 30	\$35
7:10pm	Men Pro, 1, 2	60 minutes	250, 200, 150, 80, 50, 20	\$40





### Ashland Criterium Rules & Information:

- All 2016 USAC Rules are in effect.
- Riders must have a valid and current USAC license. Registration and one day licenses are available on line through [www.usacycling.org](http://www.usacycling.org). One day and annual licenses are also available on race day at Registration.
- Registration deadline for on-line registration is Friday May 14<sup>th</sup>, 12 noon central. There is day-of-event registration available until 30 minutes before each race for an additional \$10.
- Riders may register for a second race for an additional \$10 (up to 30 minutes before the race).
- A “wheel pit” will be available just past the finish line. Wheels should be reclaimed within 30 minutes of the conclusion of each race. The promoter is not responsible for lost or stolen wheels.
- Awards presentations will immediately follow each race. Pay attention or you will miss out on your podium spot.
- There is ample parking on city streets or but please note that parking is only allowed on the south and west sides of most streets. Be courteous and respectful to Ashland residents who have graciously allowed us to close the streets for our race.
- The race will be held rain or shine, but there may be delays for severe weather.
- The promoter reserves the right to combine fields or limit payouts to half the field.

**Free wheels for one lucky rider:** All registered racers are also eligible to enter a drawing for a free set of Williams System 30 wheels, to be awarded at 11:30 on Sunday. Check out the Williams wheels at their tent at all three races of the Nebraska Omnium Weekend.

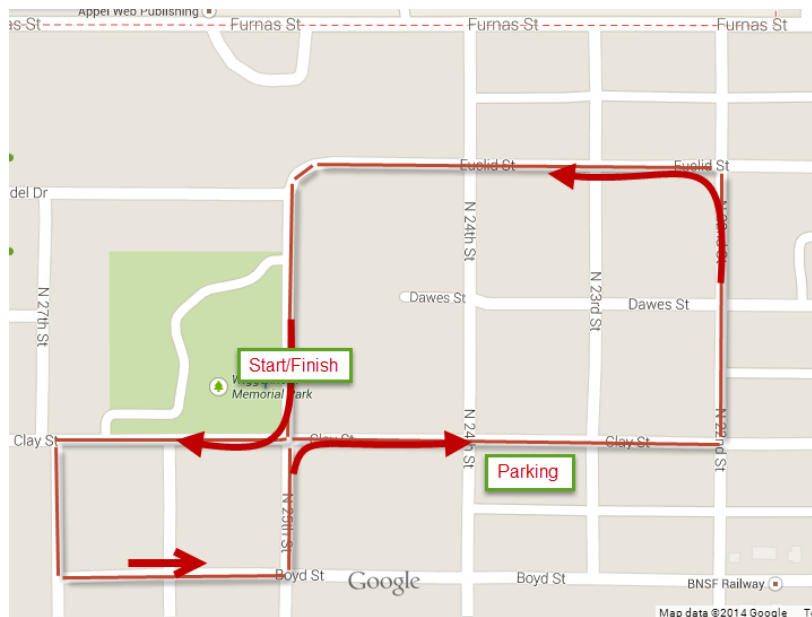


**Bonus prize for juniors, category 4 women, and category 5 men.** In order to encourage participation by beginners we will give away a Cascade Trainer on Sunday. It's a brand new in the box trainer, similar to a Cyclops fluid trainer. We will use the same raffle tickets as the Williams wheels raffle; we will keep drawing until we get a junior, category 4 woman or category 5 man. This will awarded at Sunday's road race.



## Ashland Criterium Course Description:

This is the same course as last year, again going counter clockwise. Staging and start will be on the hill on N 25<sup>th</sup> street, near the swimming pool. Racers will make a series of sharp corners, then take a fast descent on Clay Street, then take two sharp corners onto Euclid Street. At the gradual bend onto 25<sup>th</sup> street there is an uphill stretch to the finish line. Racers will need to pay attention because attacks could happen at several points on the course. The course is 1 mile long. Go to our facebook page to see the course profile. (Search for Nebraska Omnium Weekend).



The race is held at Wiggernhorn Park, at Ashland's swimming pool. The pool will not be open yet. There is a large restroom at the park for changing, and there will be portable toilets near the start line.

Directions from I-80: take exit 426, go northwest on Highway 66 into Ashland. Due to construction you will need to turn left at Casey's, then right, then keep going north 6 blocks, and then turn left (west) on Furnas street/Ashland Road until 24<sup>th</sup> Street. There is ample parking on the city streets but make sure you observe parking laws and be respectful of Ashland residents. Watch for the detour signs; the detours will be only a few blocks long.

Race Directors:

Rich Pearson [Richpearson@neb.rr.com](mailto:Richpearson@neb.rr.com) 402 720 4919

Craig Tuttle [craig@cjtncjt.com](mailto:craig@cjtncjt.com) 402 598 6838

**SID DILLON**



*You are what drives us!*

**Dillon Brothers**  
**Harley-Davidson**  
& **MotorSports**

**SID DILLON CHEVROLET/  
DILLON BROTHERS HARLEY DAVIDSON & MOTORSPORTS  
NEBRASKA STATE ROAD RACE CHAMPIONSHIP**

**South Bend, Nebraska**

**Sunday May 15th, 2016. 9 am/1130 am**

**2380 in cash prizes plus merchandise for the Road Race**

Racers in the Sid Dillon Road Race will discover that Nebraska is not flat. This course has plenty of hills and an exciting uphill finish. Please note that this course is slightly different than last year's course; we take 210th street instead of Highway 50 to avoid the heavy traffic. It's an 11 mile loop instead of 16 mile loop.

**Registration and number/chip pickup is at Round the Bend Steakhouse, 30801 East Park Highway (Highway 66), Ashland. It is 6 miles east of Ashland or 2 miles east of I-80. Look for the three flag poles at the top of the hill.**



This is the third and final event of the Nebraska Omnium Weekend, which is #2 of the Midwest Flyover Series, offering \$30,000 plus merchandise in prizes. Each race earns omnium points for the Nebraska Omnium Weekend plus these points accumulate in the Midwest Flyover Series.

See [www.MidwestFlyover.com](http://www.MidwestFlyover.com) for details.

Category	Start	Laps	Miles	Prizes	Field Limit	Entry Fee
Men 4	9:00	4	40	\$100, 80, 60, 30	75	\$35
Men Masters 50+	9:00	4	40	\$50,30,20 each	75	\$35
Men 5, Women 4	9:05	3	30	Medals/3	50	\$30
Women Masters 40+	9:05	3	30	\$50, 30, 20	50	\$35
Juniors 9-12, 13-14	9:10	1	10	Medals/3	50	\$10
Juniors 15-16, 17-18	9:10	2	20	Medals/3	50	\$10
Men Pro, 1 & 2	11:30am	7	70	\$250,200,150,80,50,20	75	\$40
Men 3	11:35	6	60	\$150,100,80,50,30	75	\$35
Women 1, 2, 3	11:40	5	50	\$250,200,150,80,50,20	50	\$40

**Free wheels for one lucky rider:** All registered racers are also eligible to enter a drawing for a free set of Williams System 30 wheels. Check out the Williams wheels at their tent at all three races of the Nebraska Omnium Weekend.



**Bonus prize for juniors, category 4 women, and category 5 men.** In order to encourage participation by beginners we will give away a Cascade Trainer. It's a brand new in the box trainer, similar to a Cyclops fluid trainer. We will use the same raffle tickets as the Williams wheels raffle; we will keep drawing until we get a junior, category 4 woman or category 5 man.



Both drawings will occur just prior to the 11:30 start of the Pro/1,2 racers.



**REGISTRATION IS ONLINE AT <http://www.usacycling.org>. It is fast and secure and the preferred method. Online registration for the road race closes at 12 noon Friday May 13.** Registration on the day of the event is available until 30 minutes before the race for an extra \$10. The entry fee includes USAC registration fees and chip rental.

- Riders must have a USAC annual license OR purchase a 1-day license through [www.USACycling.org](http://www.USACycling.org). Annual or one day licenses are available at registration.
- State championships are only for annual license holders who are residents of Nebraska.
- Use your number from the previous events. Put the number on the left side. Line up in the staging area 15 minutes before your event to allow for roll call and instructions.
- Allow sufficient time prior to your race to pick up your timing chip. Chips are turned in Saturday afternoon and reissued on Sunday.
- Registration for just one or two events of the Nebraska Omnium Weekend is permitted; omnium points will be awarded to all racers as described below.
- Don't forget to return your chip after the race.

#### **GENERAL RACE RULES & INFORMATION**

- All 2016 USAC rules are in effect.
- Racers can work only with the group they started with. If one group overtakes another both groups are neutralized while passing.
- Events will be held rain or shine.
- Place race numbers on the left side.
- Helmets must be worn at all times while on the bike.
- Only Nebraska residents are eligible for Nebraska State Championship awards.
- Race organizers reserve the right to cancel/combine events or pay out to only the top half of a field in the event of low rider turnout.
- Neutral wheel support will be "wheels in/wheels out." Please make sure to identify your wheels properly. The promoter is not responsible for lost or stolen wheels. Please share wheels with teammates as there is limited space for wheels.
- The yellow line rule will be strictly enforced, except that the course will be open to two full lanes for the last 500 meters; marked with traffic cones.
- Junior gear restrictions will be enforced as specified in the USAC 2016 Rulebook. All junior riders will be subject to a rollout immediately following their competition. Rollout prior to the race is available and encouraged.
- Juniors: You will have your own group for the road race. Riders 9-12 and 13-14 will finish after one lap (10 miles); riders 15-16 and 17-18 will continue on for another lap (20 miles).
- Race result protests must be filed within fifteen minutes of a result posting. Race occurrence reports must be filed with a race official within fifteen minutes of the finish of a race. Race organizers will attempt to distribute prizes within an hour of posting final results.
- All races will begin promptly as scheduled and will be conducted regardless of weather conditions, unless the officials and race organizers agree to modify and/or cancel a race due to extraordinary circumstances or potentially dangerous weather or road conditions.
- **RACE SUPPORT:** No personal or team support vehicles will be permitted on the course. Neutral wheel support may be provided in the road race on a "wheels in, wheels out" basis. Wheels should be clearly marked with rider name and race number. All riders must put their wheels in the wheel truck at least 15 minutes prior to the start of the first race. Wheels should be reclaimed within 30 minutes of the conclusion of each race.

## COURSE DETAILS

Each race group will stage in the Round the Bend Steakhouse driveway. There will be a very short neutral rollout ; racing will begin on the descent to South Bend. The **finish line will be about 500 meters south of Highway 66, at the highest point of the course.** The full width of the road will be available for the last 500 meters-look for the cones. After finishing, riders should quickly move off the road to allow other groups to continue their race. Prizes and awards will be distributed in the parking lot at Round the Bend right after finish of the early groups and again after the 11:30 groups. Free pizza and soft drinks will be available after the races. (Round the Bend Restaurant will not be open.)

There will be a feed zone and discard zone just past the finish line directly across from Round the Bend. Hand-ups will be from the right hand side of the road only. Neutral water will be provided at the feed zone; personal or team hand-ups are also allowed within the feed zone. Discarding of empty bottles anywhere other than the Feed Zone or Discard Zone is not permitted. Hand ups outside the official feed zone are not permitted. Racers are asked to not attack in the feed zones. Many experienced racers carry enough water so they don't have to rely on a hand-up.

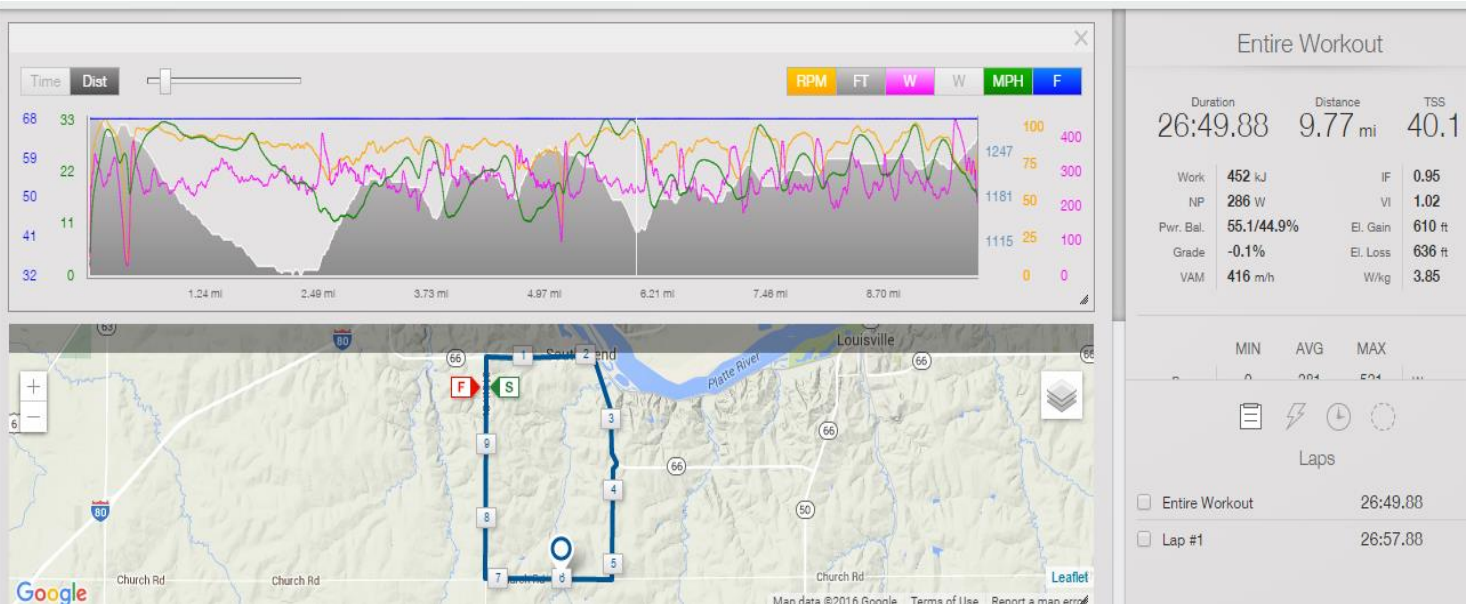
Immanuel Lutheran Church is on the SW corner of the course; Sunday services are from 10:30 to 11:30. Be respectful and courteous to any church traffic. We will have volunteers stationed there to direct traffic but racers should take extra care at that corner.

**Directions to the course:** take I-80 to exit 426 (Ashland/South Bend), drive east on Highway 66 2 miles to the hill with three flags, at Round the Bend Steakhouse (Home of the Testicle Festival on June 13<sup>th</sup>). Round the Bend is closed on Sundays. The nearest gas station or food is in Ashland 10 miles away so plan ahead.



Here is a link to a public Training Peaks file for the course:

<http://home.trainingpeaks.com/athlete/workout/RZ5LIJ5K4HXB4MERABHI475QXQ>



Race Directors:

Rich Pearson, 1359 Wilmont Street Fremont, Nebraska 68025 (402) 720-4919

[Richpearson@neb.rr.com](mailto:Richpearson@neb.rr.com)

Craig Tuttle [craig@cjtncjt.com](mailto:craig@cjtncjt.com) (402) 598-6838



# Omnium Information

**The Nebraska Omnium Weekend** is a set of three races in which riders compete for points in each event and final placings are determined by total points in all events. Riders will receive points for their finishing placing in each of the races using the standard USAC points scale on all three races. All riders placing 16<sup>th</sup> and lower but still finishing the race will receive 1 point. The riders with the highest cumulative points at the end of the Nebraska Omnium Weekend will be awarded the cash payout and trophies. Overall ties will be broken by the placing in the road race.

Omnium Points (per USAC rulebook)

Place	Points	Place	Points	Place	Points
<b>1</b>	25	<b>6</b>	10	<b>11</b>	5
<b>2</b>	20	<b>7</b>	9	<b>12</b>	4
<b>3</b>	16	<b>8</b>	8	<b>13</b>	3
<b>4</b>	14	<b>9</b>	7	<b>14</b>	2
<b>5</b>	12	<b>10</b>	6	<b>15</b>	1

16<sup>th</sup> and below: 1 point for finishers. DNF or DNS = 0 points.



The Nebraska Omnium and Flyover Series presentation will occur following Sunday's Sid Dillon Road Race. See [www.MidwestFlyover.com](http://www.MidwestFlyover.com) for scoring details including tiebreaker rules.

## Omnium Prize List \$ 1580

Junior Women	Medals
Junior Men	Medals
Women 4	Medals
Men 5	Medals
Men Masters 50+	40, 25, 10
Women Masters 40+	40, 25, 10
Men 4	80, 50, 30, 20, 10
Women P,1,2,3	150, 105, 80, 60, 50, 40
Men 3	100, 70, 40, 30, 20, 10
Men P,1,2	150, 105, 80, 60, 50, 40



[www.teamkaoscycling.com](http://www.teamkaoscycling.com)

Joyride Bicycles, Lincoln [www.joyridenebraska.com](http://www.joyridenebraska.com)



**Lodging:** There are several lodging opportunities.

Mahoney State Park and Platte River State Park are on or near the road race course near Ashland. Both have modern camping facilities plus lodges. The lodges are similar to nice hotels plus you have lots of recreational opportunities. Both lodges have restaurants (open for breakfast also).

Mahoney: [outdoornebraska.ne.gov/parks/guides/parksearch/showpark.asp?Area\\_No=273](http://outdoornebraska.ne.gov/parks/guides/parksearch/showpark.asp?Area_No=273)

Platte River:

[outdoornebraska.ne.gov/Parks/park\\_pages/PlatteRiver\\_SP/pdf/platte\\_river\\_state\\_park\\_accomodations.pdf](http://outdoornebraska.ne.gov/Parks/park_pages/PlatteRiver_SP/pdf/platte_river_state_park_accomodations.pdf)

The nearest hotel 10 minutes away at Super 8 in Gretna; several others are available 20 minutes away near Omaha, or 30 minutes away in Lincoln. There are no hotels in Ashland or Louisville.

**Nearby Attractions:**

- **Strategic Air and Space Museum** [www.sasmuseum.com](http://www.sasmuseum.com) One of the best aircraft museums around. Just west of the interstate; you can't miss the B1 bomber in the front yard.
- **Mahoney State Park** Nebraska's largest and most popular state park, just west of the interstate on Highway 66.
- **Platte River State Park** on Highway 66 just east of the road race course.
- **Others:** see [www.visitcasscounty.com](http://www.visitcasscounty.com) and [www.visitsaunderscounty.org](http://www.visitsaunderscounty.org).

## RACE SPONSORS

Title Sponsor: Sid Dillon Chevrolet Fremont and Blair / Dillon Brothers Harley Davidson and Motorsports. [www.siddillon.com](http://www.siddillon.com) and [www.dillon-brothers.com](http://www.dillon-brothers.com).

Thanks again to Sid Jr and Blake for supporting this event through the years.

**SID DILLON**



*You are what drives us!*

**Dillon Brothers**  
**Harley-Davidson**  
& **MotorSports**

